



RR 5516 Trailer For Wood Edger Owner's Manual





WARNING:

Read carefully and understand all ASSEMBLY AND OPERATION INSTRUCTIONS before operating. Failure to follow the safety rules and other basic safety precautions may result in serious personal injury.

Thank you very much for choosing this product! For future reference, please complete the owner's record below:

Model: RR_____ Purchase Date:_____

Save the receipt, warranty and these instructions. It is important that you read the entire manual to become familiar with this product before you begin using it. This product is designed for certain applications only. The manufacturer cannot be responsible for issues arising from modification. We strongly recommend this product not be modified and/or used for any application other than that for which it was designed. If you have any questions relative to a particular application, DO NOT use the product until you have first contacted us to determine if it can or should be performed on the product.

For technical questions please visit www.range-road.ca or www.range-road.com.



GENERAL SAFETY RULES

WARNING: Read and understand all instructions. Failure to follow all instructions listed below may result in serious injury.

CAUTION: Do not allow persons to operate or assemble this machine until they have read this manual and have developed a thorough understanding of how the machine works.

WARNING: The warnings, cautions, and instructions discussed in this instruction manual cannot cover all possible conditions or situations that could occur. It must be understood by the operator that common sense and caution are factors which cannot be built into this product, but must be supplied by the operator.



WORK AREA

Keep the work area clean, free of clutter. Cluttered and dark work areas can cause accidents. Keep children and bystanders away while operating the saw mill. Distractions can cause you to lose control, so visitors should remain at a safe distance from the work area. Be alert to your surroundings. Using a machine in confined work areas may put you dangerously close to rotating parts.

PERSONAL SAFETY

Stay alert. Watch what you are doing and use common sense when using the machine. Do not use while you are tired or under the influence of drugs, alcohol or medication. Inattention while operating a machine may result in serious personal injury.

Dress properly. Do not wear loose clothing, dangling objects, or jewelry. Keep your hair, clothing and gloves away from moving parts. Loose clothes, jewelry or long hair can be caught in moving parts.

Use safety apparel and equipment. Use safety goggles or safety glasses with side shields which comply with current national standards, or when needed, a face shield. Use a dust mask if working in dusty work conditions. This applies to all persons in the work area. Also use non-skid safety shoes, hardhat, gloves, dust collection systems, and hearing protection when appropriate.



USE AND CARE

- **Do not modify the machine in any way.** Unauthorized modification may impair the function and/or safety and could affect the life of the equipment. There are specific applications for which the machine was designed.
- **Always check for damaged or worn parts before using the machine.** Broken parts will affect the operation. Replace or repair damaged or worn parts immediately.
- **Do not exceed the machines load capacity.**
- **Distribute the load evenly.** Uneven loads may cause the machine to tip, resulting in personal injury to the operator or others.
Use the machine on flat and level surfaces capable of supporting the machine and its maximum load.
- **Pulling or pushing** a load on a slanted or uneven surface can result in loss of control. The machine needs to be on a flat and level surface before use.
- **Store idle machine.** When machine is not in use, store it in a secure place out of the reach of children.



IMPORTANT SAFETY INFORMATION

WARNING! Read all instructions. Failure to follow all instructions listed below may result in fire, serious injury and/or DEATH. The warnings and precautions discussed in this manual cannot cover all possible conditions and situations that may occur. It must be understood by the operator that common sense and caution are factors which cannot be built into this product, but must be supplied by the operator.

Set Up Precautions.

1. Gasoline fuel and fumes are flammable, and potentially explosive. Use proper fuel storage and handling procedures. Do not store fuel or other flammable materials near the machine.
2. Have fire extinguishers nearby.
3. Operation of this equipment may create sparks that can start fires around brush and dry vegetation. A spark arrestor may be required. The operator should contact local fire agencies for laws or regulations relating to fire prevention requirements.
4. Set up and use only on a flat and level surface. Area must be well ventilated.
5. Wear ANSI-approved safety goggles, heavy-duty work gloves, and dust mask/respirator during set up.
6. Use only lubricants and fuel recommended in the engine manual or in the Specifications Chart of this manual.



CARBON MONOXIDE HAZARD !!!

**Using an engine indoors
CAN KILL YOU IN MINUTES.**

**Engine exhaust contains carbon monoxide.
This is a poison you cannot see or smell.**



**NEVER use gas engines indoors
EVEN IF doors and window are open.**



**Only use OUTSIDE and far away from windows,
doors and vents.**

1. Keep children and bystanders away from the equipment, especially during operation.
2. Do not leave the equipment unattended when it is running. Turn off the equipment (and remove safety keys, if available) before leaving the work area.
3. Wear ANSI-approved safety glasses, hearing protection, and NIOSH-approved dust

mask/respirator under a full face shield during use. Wearing steel toe shoes is also recommended.

4. Wear heavy-duty work gloves when handling the blades.
5. People with pacemakers should consult their physician before use. Electromagnetic fields in close proximity to a heart pacemaker could cause pacemaker interference or pacemaker failure. Caution is necessary when near the engine's magneto or recoil starter.
6. Use only accessories that are recommended by Range Road for your model. Accessories that may be suitable for one piece of equipment may become hazardous when used on another piece of equipment.
7. Do not operate in explosive atmospheres, such as in the presence of flammable liquids, gases, or dust. Gasoline-powered engines may ignite the dust or fumes.
8. Stay alert, watch what you are doing and use common sense when operating this piece of equipment. Do not use this piece of equipment while tired or under the influence of drugs, alcohol or medication.
9. Do not overreach. Keep proper footing and balance at all times. This enables better control of the equipment in unexpected situations.
10. Dress properly. Do not wear loose clothing or jewelry. Keep hair, clothing and gloves away from moving parts. Loose clothes, jewelry or long hair can be caught in moving parts.
11. Parts, especially exhaust system components, get very hot during use. Stay clear of hot parts.
12. Do not cover the engine or equipment during operation.
13. Keep the equipment, engine, and work area clean at all times.
14. Use the equipment, accessories, etc., in accordance with these instructions and in the manner intended for the particular type of equipment, taking into account the working conditions and the work to be performed. Use of the equipment for operations different from those intended could result in a hazardous situation.
15. Do not operate the equipment with known leaks in the engine's fuel system.
16. **WARNING:** The brass components of this product contain lead, a chemical known to the State of California to cause birth defects (or other reproductive harm). (California Health & Safety code § 25249.5, et seq.)
17. **WARNING:** Some dust created by power sanding, sawing, grinding, drilling, and other construction activities, contains chemicals known [to the State of California] to cause cancer, birth defects or other reproductive harm. Some examples of these chemicals are:
 - Lead from lead-based paints
 - Crystalline silica from bricks and cement or other masonry products
 - Arsenic and chromium from chemically treated lumberYour risk from these exposures varies, depending on how often you do this type of work. To reduce your exposure to these chemicals: work in a well ventilated area, and work with approved safety equipment, such as those dust masks that are specially designed to filter out



microscopic particles. (California Health & Safety Code § 25249.5, et seq.)

18. This product contains or, when used, produces a chemical known to the State of California to cause cancer and birth defects or other reproductive harm. (California Health & Safety Code § 25249.5, et seq.)
19. When spills of fuel or oil occur, they must be cleaned up immediately. Dispose of fluids and cleaning materials as per any local, state or federal codes and regulations. Store oil rags in a bottom-ventilated, covered, metal container.
20. Keep hands and feet away from moving parts. Do not reach over or across equipment while operating.
21. Before use, check for misalignment or binding of moving parts, breakage of parts, and any other condition that may affect the equipment's operation. If damaged, have the equipment serviced before using. Many accidents are caused by poorly maintained equipment.
22. Use the correct equipment for the application. Do not modify the equipment and do not use the equipment for a purpose for which it is not intended.
23. Keep children and bystanders away from the equipment, especially during operation.
24. Do not leave the equipment unattended when it is running. Turn off the equipment (and remove safety keys, if available) before leaving the work area.
25. Wear ANSI-approved safety glasses, hearing protection, and NIOSH-approved dust mask/respirator under a full face shield during use. Wearing steel toe shoes is also recommended.
26. Wear heavy-duty work gloves when handling the blades.
27. People with pacemakers should consult their physician before use. Electromagnetic fields in close proximity to a heart pacemaker could cause pacemaker interference or pacemaker failure. Caution is necessary when near the engine's magneto or recoil starter.
28. Use only accessories that are recommended by Range Road for your model. Accessories that may be suitable for one piece of equipment may become hazardous when used on another piece of equipment.
29. Keep children and bystanders away from the equipment, especially during operation.
30. Do not leave the equipment unattended when it is running. Turn off the equipment (and remove safety keys, if available) before leaving the work area.
31. Wear ANSI-approved safety glasses, hearing protection, and NIOSH-approved dust mask/respirator under a full face shield during use. Wearing steel toe shoes is also recommended.

32. Keep children and bystanders away from the equipment, especially during operation.
33. Do not leave the equipment unattended when it is running. Turn off the equipment (and remove safety keys, if available) before leaving the work area.

34. Wear ANSI-approved safety glasses, hearing protection, and NIOSH-approved dust mask/respirator under a full face shield during use. Wearing steel toe shoes is also recommended.
35. Wear heavy-duty work gloves when handling the blades.
36. People with pacemakers should consult their physician before use. Electromagnetic fields in close proximity to a heart pacemaker could cause pacemaker interference or pacemaker failure. Caution is necessary when near the engine's magneto or recoil starter.
37. Use only accessories that are recommended by Range Road for your model. Accessories that may be suitable for one piece of equipment may become hazardous when used on another piece of equipment.
38. Do not operate in explosive atmospheres, such as in the presence of flammable liquids, gases, or dust. Gasoline-powered engines may ignite the dust or fumes.
39. Stay alert, watch what you are doing and use common sense when operating this piece of equipment. Do not use this piece of equipment while tired or under the influence of drugs, alcohol or medication.
40. Do not overreach. Keep proper footing and balance at all times. This enables better control of the equipment in unexpected situations.
41. Dress properly. Do not wear loose clothing or jewelry. Keep hair, clothing and gloves away from moving parts. Loose clothes, jewelry or long hair can be caught in moving parts.
42. Parts, especially exhaust system components, get very hot during use. Stay clear of hot parts.
43. Do not cover the engine or equipment during operation.
44. Keep the equipment, engine, and work area clean at all times.
45. Use the equipment, accessories, etc., in accordance with these instructions and in the manner intended for the particular type of equipment, taking into account the working conditions and the work to be performed. Use of the equipment for operations different from those intended could result in a hazardous situation.
46. Do not operate the equipment with known leaks in the engine's fuel system.
47. **WARNING:** The brass components of this product contain lead, a chemical known to the State of California to cause birth defects (or other reproductive harm). (California Health & Safety code § 25249.5, et seq.)
48. **WARNING:** Some dust created by power sanding, sawing, grinding, drilling, and other construction activities, contains chemicals known [to the State of California] to cause cancer, birth defects or other reproductive harm. Some examples of these chemicals are:
 - Lead from lead-based paints
 - Crystalline silica from bricks and cement or other masonry products
 - Arsenic and chromium from chemically treated lumberYour risk from these exposures varies, depending on how often you do this type of work. To reduce your exposure to these chemicals: work in a well ventilated area, and work with

approved safety equipment, such as those dust masks that are specially designed to filter out microscopic particles. (California Health & Safety Code § 25249.5, et seq.)

49. This product contains or, when used, produces a chemical known to the State of California to cause cancer and birth defects or other reproductive harm. (California Health & Safety Code § 25249.5, et seq.)
50. When spills of fuel or oil occur, they must be cleaned up immediately. Dispose of fluids and cleaning materials as per any local, state or federal codes and regulations. Store oil rags in a bottom-ventilated, covered, metal container.
51. Keep hands and feet away from moving parts. Do not reach over or across equipment while operating.
52. Before use, check for misalignment or binding of moving parts, breakage of parts, and any other condition that may affect the equipment's operation. If damaged, have the equipment serviced before using. Many accidents are caused by poorly maintained equipment.
53. Use the correct equipment for the application. Do not modify the equipment and do not use the equipment for a purpose for which it is not intended.

Service Precautions

- Before servicing, maintenance or cleaning:
 - Turn the engine switch/key to its “OFF” position.
 - Allow the engine components to completely cool.
- Always keep all safety guards in place and in proper working order. Safety guards can include muffler, air cleaner, mechanical guards and heat shields, among other guards.
- Wear approved safety goggles, heavy-duty gloves, and a dust mask/respirator during service.
- Maintain all labels on the saw mill. These show important information. If unreadable, missing or damaged, contact Range Road for a replacement.
- Have the equipment serviced by a qualified repair person using only OEM replacement parts. This will ensure that the safety of the saw mill is maintained. Do not attempt any service or maintenance procedures not explained in this manual or any procedures that you are uncertain of your ability to perform in a safe or correct manner.
- Store all equipment out of the reach of children.
- Follow scheduled engine and equipment maintenance.

- **Refueling:**
 - Do not smoke, or allow sparks, flames, or other sources of ignition around the equipment, especially when refueling.
 - Do not refill the fuel tank while the engine is running or hot.



- Do not fill fuel tank to the top. Leave a little room for the fuel to expand as needed.
- Refuel in a well-ventilated area only

TO PREVENT SERIOUS INJURY:

Operate only with proper spark arrestor(s) installed. Operation of this equipment may create sparks that can start fires around dry vegetation and brush. A spark arrestor may be required. The operator should contact local agencies for laws or regulations relating to fire prevention requirements.

Assembly

Read all of the safety precautions and warnings in this manual before setting up or using this product.

TO PREVENT SERIOUS INJURY: The conveyor can be dangerous if assembled incorrectly. If you do not feel completely comfortable assembling it, please have a qualified technician assemble it.

Make sure you have a large area cleared to assemble the unit and open the crate.





It is best to pull the components out of the crate and lay them out so you can access them as needed.



Arrange the 3 frame parts like this.



Find this leg mount brackets and legs.

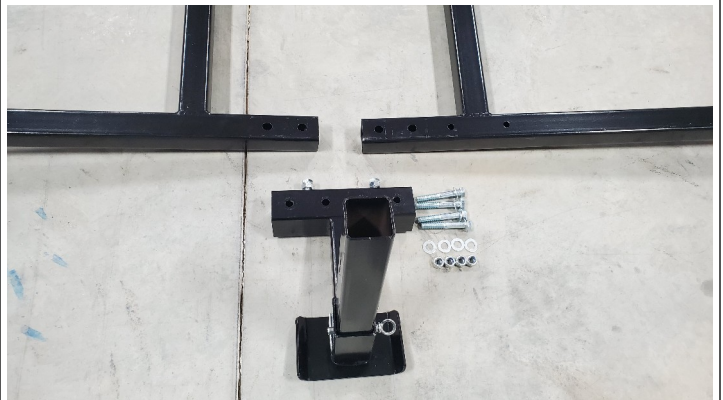


Install the them like this.





Those connect the frame parts together. Lift the frame.
Insert the frame on both sides and bolt it together.



Do this for all 4 to connect all 3 frame parts together.





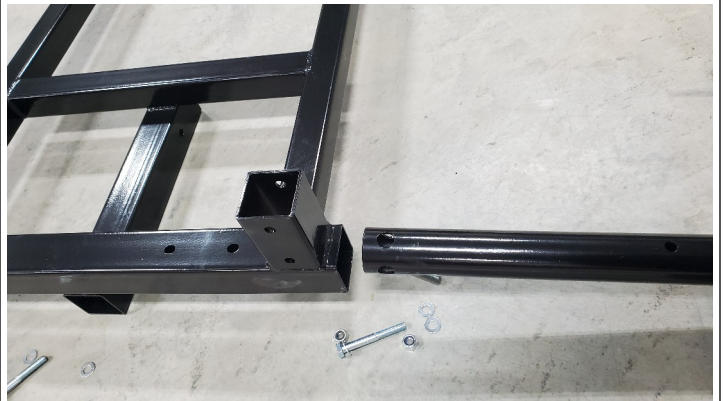
This is how it should look like.

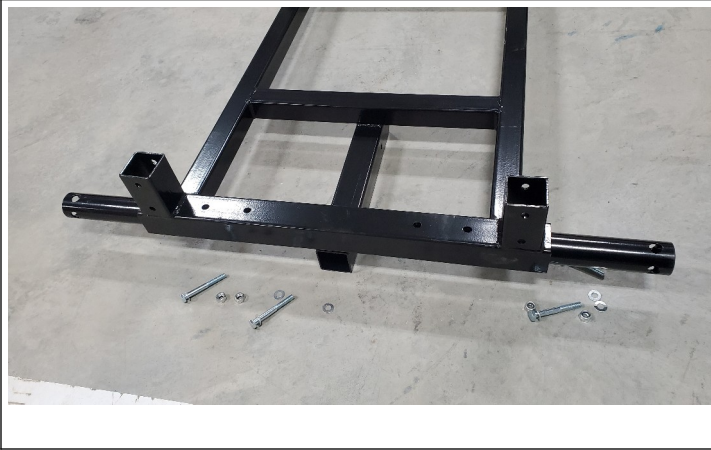


There are 2 round bars with 2 bolts in it.
Take the bolts out.



One goes to the front and one to the end of the frame.
Slide the round bar inside the square tubing of the
frame. Install the 2 bolts.





Lift the frame on one end and install 2 jacks.



Crank up the jacks to get the carjack out.





Lift the frame at the other end and also install the round bar.



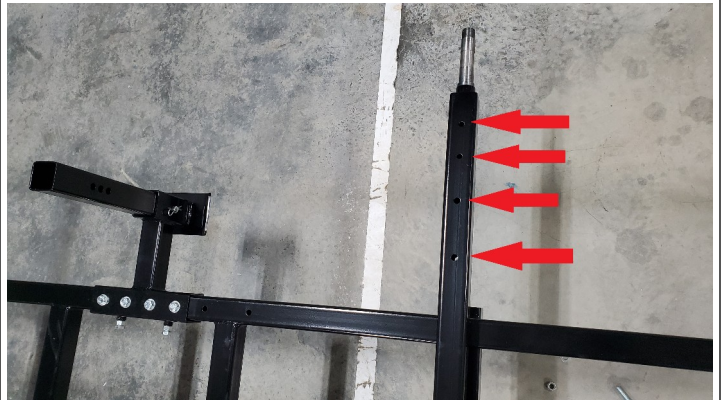
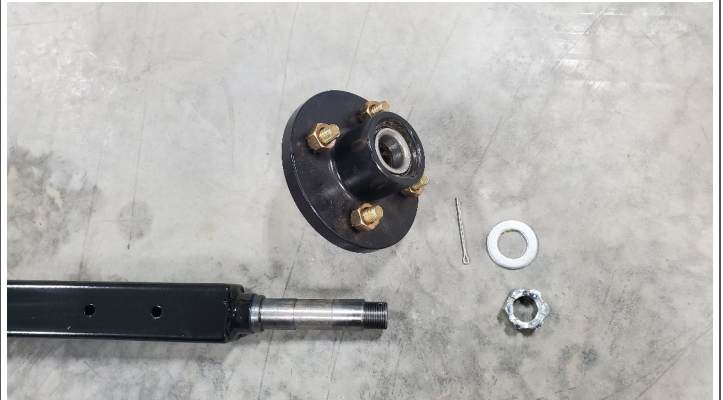
Install the jacks and crank the frame up.

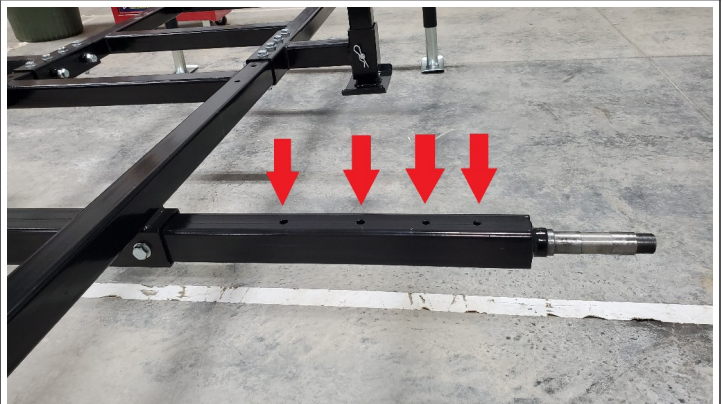
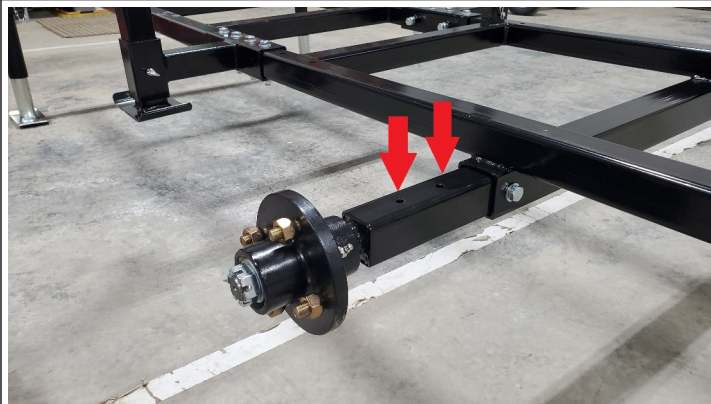


Next is the axle.

Take out the cotter pin on one side. Get the nut and washer of. Take of the hub.

The axle has 2 bolts to mount on to the frame. Also 2 holes on one side and 4 on the other side. The 2 bolts on the side install the axle into the square tubing of the frame. The 4 hole on top need to be on the left hand side of the trailer.





Re-install the removed hub on the axle – tighten axle nut until hub is becoming hard to turn by hand – back off nut until axle nut lines up with hole in axle pin – install cotter pin and install dust caps.



Install the wheels. Torque to 75 ft lbs.
Check tire pressure.





Install 2 fenders. Take out the 2 bolts in the fender. Fenders are mounted beside the wheels on the axle.



Find the draw bar. Remove bolts and install at the front of the frame. There is a square bar in the middle for it.





There are 4 of those extension feet.



Mount one on each corner.



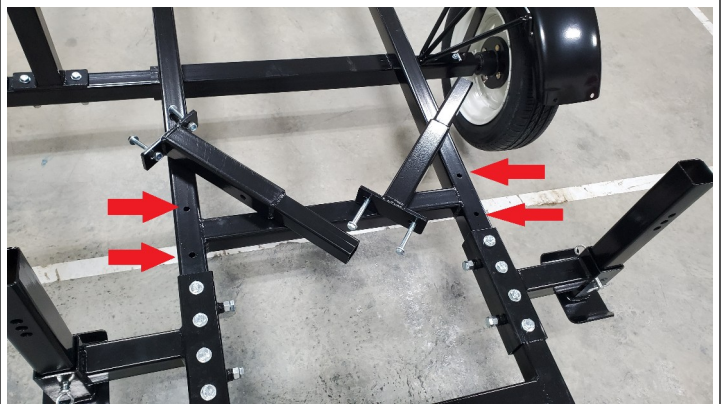
Next are 5 edger support legs.



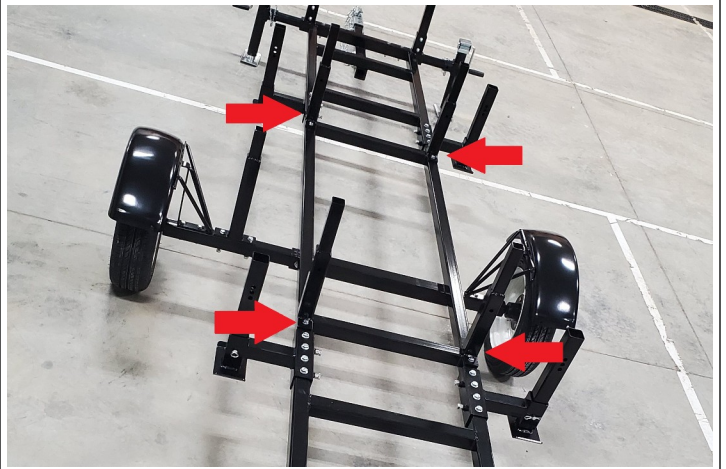
One will be installed beside the left fender on the axle.



The other 4 will be mounted beside the 4 leg mount brackets.



Only insert the screws and do not tighten them if you are installing the edger right away.



Thats how it should look like.

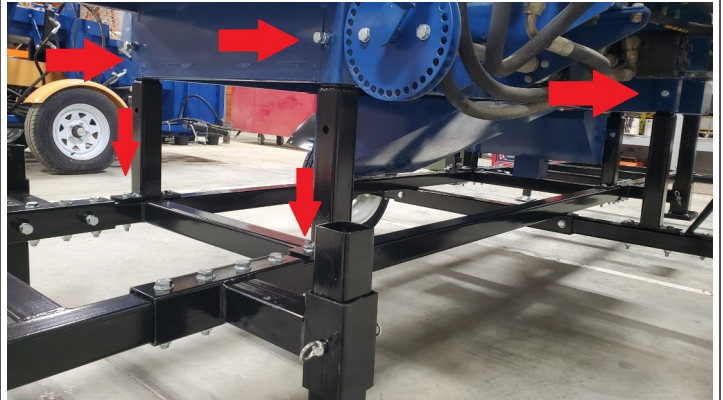




If you install the edger it is easier to install those edger support legs into the recesses on the edger itself. Support the machine using straps, be careful not to bend or stress any components. Install the legs. Move the edger over the trailer.



Set the edger on the frame and bolt the edger support legs down to the frame. Tighten all bolts.





Read all of the safety using this product. Inspect engine and equipment looking for damaged, loose or missing parts before operating. If any problems are found, do not use equipment until fixed properly.

Start Procedure



Before starting the engine:

- A) Follow the Set Up Instructions to prepare the equipment. Follow all instructions in the separate engine manual provided with the engine.
- B) Inspect the equipment and engine.
- C) Fill the engine with the proper amount and type of fuel and oil.
- D) Read the Equipment Operation section that follows

1. Start and operate the engine according to the provided engine manual.
2. Replacement engine operating instructions can be obtained from the engine manufacturer.



Equipment Operation

1. 1. Wear heavy-duty work gloves, ANSI-approved goggles behind a full face shield, steel-toed work boots, and a dust mask.
2.
3.

4.

WARNING

Servicing

TO PREVENT SERIOUS INJURY FROM ACCIDENTAL STARTING:

Turn the power Switch of the equipment to its “OFF” position and wait for the engine to cool before performing any inspection, maintenance or cleaning procedures.

Maintenance Procedures

Many maintenance procedures, including those not detailed in this manual, will need to be performed by a qualified technician for safety. If you have any doubts about your ability to safely service the equipment or engine, have a qualified technician service the equipment.

NOTE: These procedures are in addition to the regular checks and maintenance explained as part of the regular operation of the engine and equipment.

Engine Maintenance and Service

Follow the instructions found in the included engine manual.

Storage

1. Wait for engine to cool, then clean equipment with clean cloth.

2. Clean the engine and/or prepare it for storage according to engine manual instructions.
3. Apply a thin coat of rust preventive oil to all uncoated metal parts.
4. Cover and store in dry, well-ventilated area out of reach of children.
5. For cold weather operation, store the equipment in a cool dry area to prevent condensation and premature wear.

Equipment Troubleshooting



Follow all safety precautions whenever diagnosing or servicing the equipment or engine.

Parts List



PLEASE READ THE FOLLOWING CAREFULLY

The Manufacturer and/or Distributor has provided the parts list and assembly diagram in this manual as a reference tool only. Neither the Manufacturer nor Distributor makes any representation or warranty of any kind to the buyer that he or she is qualified to make any repairs to the product, or that he or she is qualified to replace any parts of the product. In fact, the Manufacturer and/or Distributor expressly states that all repairs and parts replacements should be undertaken by certified and licensed technicians, and not by the buyer. The buyer assumes all risk and liability arising out of his or her repairs to the original product or replacement parts thereto, or arising out of his or her installation of replacement parts thereto.

Note: Some parts are listed and shown for illustration purposes only, and are not available individually as replacement parts.

WARRANTY

One-year limited warranty

For technical questions, please visit www.range-road.ca or www.range-road.com